



Race Instructions

Marie-Agnès PERON Trophy 2021

Event which counts towards
French Championships Solo Offshore Race – Mini 6.50

Dates : **from 3rd to 5th June 2021**

Place : **DOUARNENEZ (29100)**
Organising club : **WINCHES CLUB**

1 Rules

- 1.1 The rules as defined in the Racing Rules of Sailing [RCV] (*World Sailing*) 2021-2024.
- 1.2 The national rules for foreign competitors defined in «Appendix : « National rules»».
- 1.3 Part B section of the RIPAM International Regulations for Preventing Collisions at Sea when it replaces the rules of Chapter 2 of the RCV [Racing Rules of Sailing], between 20:30 and 07:30 (*local time*)
- 1.4 The RSO (***Specific Offshore Regulations***) 2021 – Category 3 race.
- 1.5 The federal regulations.
- 1.6.1 Class Mini regulations (see Mini 2021 Guide).
- 1.7 If the course instructions are translated, **the French text takes precedence.**

2 Advertising

- 2.1 Boats can be sponsored by one or several people or companies, advertising and publicity flags and banners can only be displayed at the departure and arrival ports. Skippers must be compliant with rule 80 of the RCV [Racing Rules of Sailing].
- 2.2 The distribution of space reserved for advertising between the Mini Class, the competitor and the organiser is defined by the rules of the Mini Class, Mini guide 2021 edition (R17)
- 2.3 The competitors will be obliged to display the flags, windshields and markings defined jointly by the Mini Class and the organiser. For all breaches to this rule, the competitor at fault, after instruction, may be penalized.

3 Notice to competitors

Notices to competitors will be “displayed” digitally via the MAP Trophy website and on the application WhatsApp.

4 Modifications to the race instructions

All modifications to the race instructions will be displayed 2 hours at the latest before the warning signal for the race in which it is effective, except for any change in the race programme which will be displayed before 20:00 on the eve of the day it takes effect.

5 Signals made ashore and the official digital noticeboard

- 5.1** The signals made ashore will be sent to the flagpole located outside the Maison du Nautisme in Tréboul.
The official noticeboard will be digital via the MAP Trophy website and on the application Whatsapp, in application of the current health crisis protocol and the recommendations of the French Sailing Federation.
- 5.2** When the pennant « **Modification** » is sent ashore, the warning signal cannot be made less than one hour after the issue of the Modification.
(This modifies the race signals).

6 Race programme

Thursday 3rd May 2021 :

- Warning signal : **08:52**
- Departure : **09:00**

7 Class flag

- Mini class flag

8 Race zone

The location of the race zone is defined in the **Appendix « Race zone »**
The race zones are located in the maritime area “**Douarnenez- Iroise Sea, South Brittany, Douarnenez**”

8.1 COURSE

The courses are described in the Course Appendix including the order in which the marks must be passed as well by which side (bear away or go around them), as well as the indicative length of the course.

By the latest at the warning signal, the race committee will indicate the course to take.
The signals defining the course are clarified in **the Appendix “Course”**

8.2 First mark

The hoisting of the « **D** » flag on the Committee Boat signifies that a first mark exists.
The absence of the « **D** » flag signifies that there is no first mark.
The hoisted green flag indicates that the first mark must be passed on the starboard side. This modifies race signals.

8.3 The marks to go around or to pass by are defined in the Appendix "Course"

8.4 "Self checking-in" around the course markers

The competitors must note down their location as they pass the markers other than the departure line and the eventual first marker . Each skipper must, when he/she passes the markers defined in the Course Appendix **make a note of his/her time of passing as well as the names and number of boats located before and behind him/her then report this information on the arrival declaration**. Self checking-in on arrival is obligatory. Each competitor must provide their noted location information on arrival, to the Race Secretary.

8.5 Logbook

In case of dispute (RCV 28), the boats must be able to prove that they have respected the course by showing their logbook.

9 Markers

Race markers : see Appendix "Course"

Departure marker : **Conical yellow buoy "ville de Douarnenez"**.

Arrival marker : **Conical yellow buoy "ville de Douarnenez" (rigged with a light system using a white light)**,

First marker : **conical yellow buoy**.

10 Departure

Sailing before departure : [SP]

Pivoting bowsprit and their chandlery must be folded down to starboard, or taken down, and kept in the width limit for their position (3 metres maximum) until the departure line has been passed.

10.1 The departure will be given in application of rule 26 of the RCV (modified) :

Minutes before the departure signal	Visual signal	Sound signal	Meaning
8'	Class flag	1	Warning signal
4'	P, I, black flag	1	Preparatory signal
1'	Preparatory flag lowered	1 long	One minute
0'	Class flag lowered	1	Departure signal

NB : All procedures will announced on VHF on race channel « 72 »

10.2 The extremities of the departure line are determined by the mast of the Committee boat displaying an **orange flag** and a **conical yellow buoy "ville de Douarnenez"**.

10.3 A boat which has not been able to cross the departure line **30 minutes** after the departure signal must return to TREBOUL port and can only leave TREBOUL port at the earliest, **2 hours** after the departure signal and after authorisation from the Race Director. The GPS bearings of the departure line and the first mark will be given to the competitor who must respect passing these marks .

10.4 Rule 29.1 of RCV is modified as follows :

As far as the departure signal, a boat must satisfy rule 29.1 or 30.1 of the RCV, the Race Committee must rapidly hoist flag **X** with a sound signal. This flag must remain aloft until the boat(s) concerned have completely come back from the pre-departure side of the line or its extensions.

During an individual recall, the identified boat(s) can be informed, if possible, by VHF (**canal 72**), after a minimum delay of **two minutes**.

The absence of recall by VHF cannot give rise to compensation.

Flag X will be lowered 30 minutes maximum after the departure signal, except if the Race Committee decide to extend the delay due to weather conditions.

11 Arrival

11.1 The arrival line is defined by : the Race Committee boat mast displaying an « **Orange** » flag and on the course side a **yellow conical buoy "ville de Douarnenez" (rigged with a light system showing a white light)**, moored to the east of « Le COULINEC » rock.

The line will be oriented North South. The committee boat will be moored to the south of this line. **Watch out for the largely flooded foreshore of Le COULINEC rock.**

11.2 All competitors must declare themselves to the Race Committee by VHF on **channel 72** one hour at least before crossing the arrival line which generally speaking means after their entry into Douarnenez Bay and until contact on VHF **channel 72** is established.

12 Penalty system

12.1 Penalty for a breach of RIPAM regulations when it replaces Chapter 2 of the RCV :
When the measures of article 1.4 of the present Race Instructions are applied, rule 44 of the RCV does not apply.

A breach of a regulation of Part « B » section 2 of the RIPAM will receive, after instruction, a minimum penalty of two hours up to disqualification.

A competitor can recognise a breach of a rule of part « B » section 2 of the RIPAM, vis-à-vis another competitor. He must make this acknowledgement in writing and give it in to the Jury secretary within the time limit for complaints.

All acknowledgements of offences outlined above will receive a one hour penalty. This penalty could be aggravated, after instruction, in case of damages or injury.

12.2 Penalties for breach of rules outside chapter 2 of the RCV :

Except for rules 28 and 31, a breach of these rules could, after instruction, be sanctioned by a time penalty going as far as disqualification depending on the Jury.

12.3 Corrections :

Rule 62.1 (b) is modified as follows :

By an injury or physical harm due to the action of a boat having infringed a rule of chapter 2, or of part B, section II of the RIPAM (COLREG) when it replaces the rules of Chapter 2 of the RCV, or of a vessel which was not in the race and which was obliged to stay out of the way.

13 Time limit

The arrival line will be open for **18 hours** after the passage of the first of the category « Proto » for the Protos and the first of the category « Series » for the series.

At this deadline, the bonus in time that the Jury is likely to grant a boat may be added.

14 Complaints

14.1 Complaints must be written on the forms available from the Race Secretary and given in two hours at the most after the boat has crossed the finish line.

If the arrival happens between 20:00 and 08 :00 the competitors wanting to lodge a complaint have until 10:00 to do it.

14.2 In application of rule 61.1 (b), the numbers of boats of which a complaint has been made by either the Race Committee or Jury or Technical Committee for an incident observed in the race zone will be displayed on the official noticeboard before the time limit outlined in 14.1 above has expired.

If the Race Committee, the Jury or the Technical Committee is prevented from giving in their complaints within the time limit outlined in 14.1 the competitors will be informed by a notice of the duration of extension of the time limit for giving in complaints by the Race Committee, the Jury or the Technical Committee (This modifies the rules 61.1 (b) and 61.3 of the RCV).

14.3 Notifications will be displayed on the official noticeboard 30 minutes at the latest after the time limit for giving in complaints to inform competitors of the place, date and time of the event of which they are part or cited as witnesses.

14.4 The articles 11.1 and 16 of the present race instructions cannot be the reason for a complaint between competitors. This modifies regulation 60.1 (a). The penalties for these offences may be lighter than a disqualification if the Jury so decides. A request for re-opening of an instruction or a claim must be handed in at the latest 30 minutes after the party requesting the re-opening have been informed of the decision.

15 Classification

Classification will be carried out according to rule R-3 of the Mini 6.50 regulations.

16 Safety

On Wednesday 2 June, at 18:00, safety and weather briefing by video-conference, with respect to current health protocols.

16.1 **Signing-in at the departure** : A signing-in system at the departure will be organised in the tent on the morning of departure.

(Any competitor who has not signed in may have a complaint made against them by the Race Committee). [SP]

16.2 **Signing-in at arrival** : The arrival line will serve as signing-in for the return.

16.3 Withdrawal

Any competitor who withdraws must signal it as quickly as possible to an accompanying boat on **VHF channel 72**. He/she must insure that his/her situation and intentions have been properly received by radio relay by participants until eventual reception by an accompanying boat.

Then, **it is a necessity**, to inform the Race HQ by telephone on :

06-07-45-72-41 (priority) or on 02-98-74-38-00 as soon as he/she returns ashore.

He/she must keep the Race HQ informed of his situation, and in all cases let them know that he/she is leaving their port of call, then give a written confirmation of his/her withdrawal as soon as possible.

- 16.4** a) Gauge and safety equipment checks can take place at any time without notice by the Race Committee, either on their own initiative or at the request of the organising authority or the Jury or the Technical Committee. **[SP]**
b) Before the departure, a notice will show competitors the precise time the boats must be in race configuration, having completed all safety and gauge checks.

17 **Water exit limitations**

Boats must not come out of the water during the regatta except under reserve and according to the conditions of prior written consent of the Race Committee and the Technical Committee.

18 **Diving equipment**

Their use is tied to local regulations (port zone, etc.).

19 **Radio communication**

Except for emergencies, a boat which is racing must not send or receive vocal calls or data which are not available for all boats. **[SP]**

20 **VHF Channel**

The « VHF » race channel of the «Marie-Agnès PERON Trophy 2021» is channel « **72** ». Competitors must continually monitor channels **16 and 72** during the entire race. **[SP]**

21 **Mobile telephones**

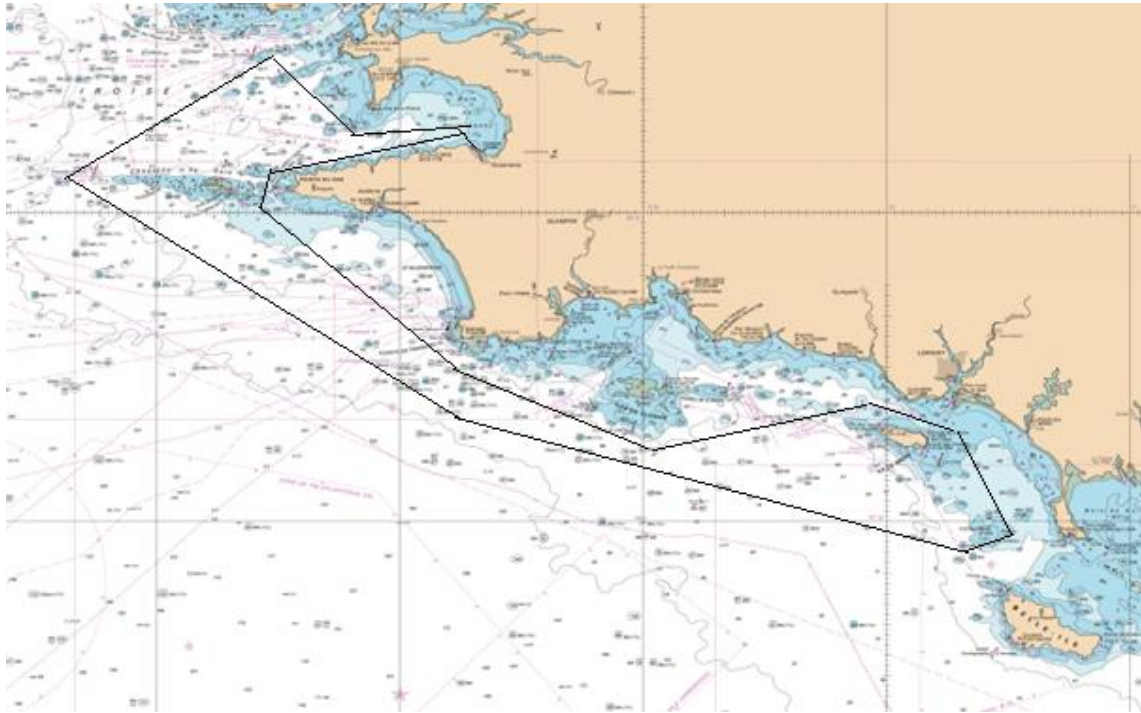
The presence of **mobile phones on board is forbidden** during the entire race. (They can be handed in to the organisation during the departure signing-in). **[SP]**

22 **Satellite positioning**

A satellite positioning system will be installed on each boat; everything must be done to facilitate the putting into place of marker buoys before the race and their maintenance in perfect working order during the race.

23 **Decision to race**

The decision of a competitor to participate in a race or to stay in a race is their sole responsibility. As a result, by accepting to participate in the race or to stay racing the competitor releases the organising authority of all responsibility in case of damage (material and/or physical).



COURSE DIRECTOR designated by the French Sailing Federation

- Denis HUGUES

REFEREES designated by the French Sailing Federation

- President of the Race Committee:	Frédéric GUERIN
- Jury President :	Simon KERISIT
- President of the Technical Committee:	Hervé CHASTEL
- IT commissioner:	Daphné LE RAI

APPENDIX

« Federal regulations applying to foreign competitors »

FFVoile Prescription to **RRS 25** (*Notice of race, sailing instructions and signals*):

For events graded 4 and 5, standard notices of race and sailing instructions including the specificities of the event shall be used. Events graded 4 may have dispensation for such requirement, after receipt of FFVoile approval, received before the notice of race has been published.

For events graded 5, posting of sailing instructions will be considered as meeting the requirements of RRS 25.1 application.

(* FFVoile Prescription to **RRS 64.3** (*Decisions on protests concerning class rules*):

The jury may ask the parties to the protest, prior to checking procedures, a deposit covering the cost of checking arising from a protest concerning class rules.

(* FFVoile Prescription to **RRS 67** (*Damages*):

Any question about or request of damages arising from an incident involving a boat bound by the Racing Rules of Sailing or International Regulation to Prevent Collision at Sea depends on the appropriate courts and cannot be dealt by the jury.

(* FFVoile Prescription to **RRS 70. 5** (*Appeals and requests to a national authority*):

The denial of the right of appeal is subject to the written authorization of the Fédération Française de Voile, received before publishing the notice of race. This authorization shall be posted on the official notice board during the event.

(* FFVoile Prescription to **RRS 78.1** (*Compliance with class rules; certificates*):

The boat's owner or other person in charge shall, under his sole responsibility, make sure moreover that his boat complies with the equipment and security rules required by the laws, by-laws and regulations of the Administration.

(* FFVoile Prescription to **RRS 86.3** (*Changes to the racing rules*):

An organizing authority wishing to change a rule listed in RRS 86.1(a) in order to develop or test new rules shall first submit the changes to the FFVoile, in order to obtain its written approval and shall report the results to FFVoile after the event. Such authorization shall be mentioned in the notice of race and in the sailing instructions and shall be posted on the official notice board during the event.

(* FFVoile Prescription to **RRS 88** (*National prescriptions*):

Prescriptions of the FFVoile shall neither be changed nor deleted in the notice of race and sailing instructions, except for events for which an international jury has been appointed.

In such case, the prescriptions marked with an asterisk (*) shall neither be changed nor deleted in the notice of race and sailing instructions. (The official translation of the prescriptions, downloadable on the FFVoile website www.ffvoile.fr, shall be the only translation used to comply with RRS 90.2(b)).

(* FFVoile Prescription to **RRS 91(b)** (*Protest committee*):

The appointment of an international jury meeting the requirements of Appendix N is subject to prior written approval of the Fédération Française de Voile. Such authorization shall be posted on the official notice board during the event.

FFVoile Prescription to **APPENDIX R** (*Procedures for appeals and requests*):

Appeals shall be sent to the head office of French Sailing Federation, 17 rue Henri Bocquillon, 75015 Paris – email: jury.appel@ffvoile.fr, preferably using the appeal form downloadable on the website of the French Sailing Federation: http://www.ffvoile.fr/ffv/web/services/arbitrage/jury_appel.asp

Course Appendix

Course 1

Pennant N° 1

Departure DOUARNENEZ Bay (possible first mark, see Race Instructions : chap. 8-2)

Depart Tréboul (possible first mark, see Race Instructions: chap 8-2)

The race markers are to be passed:

The positions of markers are given as a rough guide only.

1	Departure		to the north of Tristan island
2	La Plate	to port	(48°02,4 N - 04°45,5 W)
3	Le Chat	to starboard	(48°01,5 N - 04°48,8 W)
4	Men-Hir	to port	(47°47,8 N - 04°23,9 W)
5	Cap Caval (Card W)	to port	(47°46,5 N - 04°22,6 W)
6	Spineg (Card S)	to port	(47°45,3 N - 04°18,8 W)
7	Basse Perennes (Card W)	to port	(47°41,1 N - 04°06,3 W)
8	Jument de Glénan (Card S)	to port	(47°38,8 N - 04°01,3 W)
9	Ile de Groix and its dangers	to starboard	
10	Speerbreker (Card E)	to starboard	(47°39,1 N - 03°26,3 W)
11	Basse Mélite (Card N)	to starboard	(47°38,8 N - 03°25,5 W)
12	Edouard de Cougy (Card E)	to starboard	(47°37,9 N - 03°23,9 W)
13	Plateau des Birvideaux	to starboard by going round it	(47°29,2 N - 03°17,4 W)
14	Jument de Glénan (Card S)	to starboard	(47°38,8 N - 04°01,3 W)
15	Chaussée de Sein buoy (Card W)	to starboard	(48°03,8 N - 05°07,7 W)
16	Basse du Lis (Card S)	to starboard	(48°13,1 N - 04°44,4 W)
17	Basse Vieille buoy	to port	(48°08,3 N - 04°35,7 W)
18	Arrival		see Race Instructions Chapter 11.1

REMINDER :

11.1 The arrival line is defined by : the Race Committee boat mast displaying an « **Orange** » flag and a « **Blue** » flag and the on the race side a **yellow conical buoy "ville de Douarnenez" (rigged with a light system showing a white light)**, moored to the east of « Le COULINEC » rock. The line will be oriented North South. The committee boat will be moored to the south of this line, the conical yellow buoy "ville de Douarnenez" + white light on a pole at night, moored to the north.

Watch out for the largely flooded foreshore of Le COULINEC rock.

Departure Tréboul (Possible first marker, see Race Instructions : chap. 8-2)

The race markers are to be passed :

The position of markers are given as a rough guide only.

1	Departure		to the north of Tristan island
2	La Plate	to port	(48°02,4 N - 04°45,5 W)*
3	Le Chat	to starboard	(48°01,5 N - 04°48,8 W))
4	Men-Hir	to port	(47°47,8 N - 04°23,9 W)
5	Cap Caval (Card W)	to port	(47°46,5 N – 04°22,6 W)
6	Spineg (Card S)	to port	(47°45,3 N – 04°18,8 W)
7	Basse Perennes (Card W)	to port	(47°41,1 N – 04°06,3 W)
8	Jument de Glénan (Card S)	to port	(47°38,8 N – 04°01,3 W)*
9	Ile de Groix	to go around and leave to starboard	
10	Speerbreker (Card E)	to starboard	(47°39,1 N – 03°26,3 W)
11	Basse Mérite (Card N)	to starboard	(47°38,8 N – 03°25,5 W)
12	Edouard de Cougy (Card E)	to starboard	(47°37,9 N – 03°23,9 W)
13	Les Chats (Card S)	to go around and leave to starboard (47°35,7 N – 03°23,5 W)*	
14	Jument de Glénan (Card S)	to starboard	(47°38,8 N – 04°01,3 W)
15	Basse Perennes (Card W)	to starboard	(47°41,1 N – 04°06,3 W)
16	Chaussée de Sein Buoy (Card W)	to go around and leave to starboard (48°03,8 N - 05°07,7 W)*	
17	Basse du Lis (Card S)	to starboard	(48°13,1 N - 04°44,4
18	Basse Vieille Buoy	to port	(48°08,3 N – 04°35,7 W)
19	Arrival	see Race Instructions Chapter 11.1	

REMINDER :

11.1 The arrival line is defined by : the Race Committee boat mast displaying an « **Orange** » flag and a « **Blue** » flag and the on the race side a **yellow conical buoy "ville de Douarnenez" + white light on a pole**, moored to the east of « Le COULINEC » rock.

The line will be oriented North South. The committee boat will be moored to the south of this line, the conical yellow buoy "ville de Douarnenez" + white light on a pole at night, moored to the north.

Watch out for the largely flooded foreshore of Le COULINEC rock.

Competitors must note down their time/position data as they pass markers indicated with an * themselves.

This must be handed in on arrival to the Race Committee.